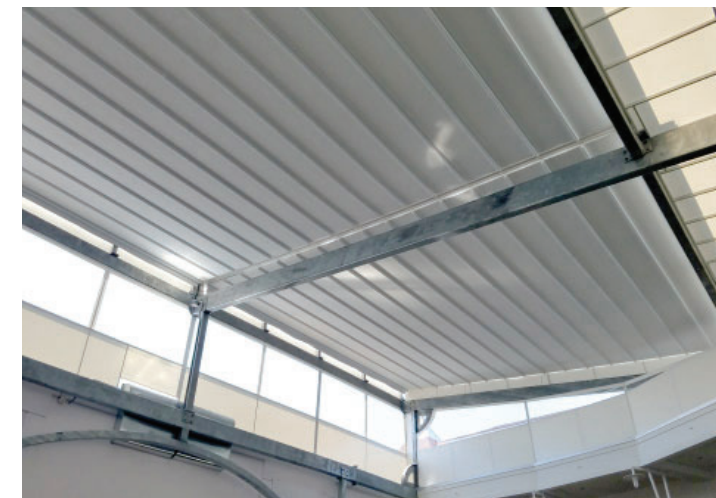




Pergotenda® Impact



Pergotenda® Impact | New Haven Awning, New Haven CT

The Impact is the “heart” of every Pergotenda® system. The core retractable cover system, made to size for the protection from sun and rain, that can be installed on suitable pre-existing structures.

Time to create with alchemy



Installed on all Corradi structures, Impact can also be used with pre-existing pergolas or other structures.

Pergotenda® Impact | We Got You Covered Outdoor, Mooresville NC



The **Outdoor Alchemist**

Special solutions



Slack canvas.

Pergotenda® Impact | Made in the Shade Inc., Las Vegas NV



Taught canvas.



Taught canvas with spacers.

Pergotenda® Impact | Miami Awning, Miami FL

Trapezoidal canvas.



Pergotenda®



Pergotenda® Impact | Miami Awning, Miami FL



The Outdoor Alchemist

PERGOTENDA® IMPACT



Impact is an aluminum structure with a retractable folding canvas. The fabric is supported by intermediate supporting tubes (1.6"x2") and terminal bars (3.2"x2") set parallel to one another every 24" approximately on pitched version and every 20" approximately on flat version. The Impact system is set in motion by a radio-controlled Dunker D839 motor with a Somfy® brand receiver. The canvas moves by sliding on the runners (2"x3.5") on carriers with 6 asymmetrical wheels with a capacity of about 1000 lbs. each. The toothed transmission belt has stainless steel cables and resists high salinity environments. The tensile strength is of 2000 lbs at break. The transmission belt is inserted in each runner, controlled by the drive pulley and a single drive shaft that guarantees the smooth movement of the canvas. Hardware and accessories are 304 stainless steel. While Corradi USA possesses a great deal of data related to engineering for the Pergotenda® product line that is related to wind ratings and load data that has been developed through specific product tests, case studies and IBC testing. It is understood that when required and due to the custom nature of our projects, engineering must be project specific and adhere to the rules and regulations at the local level where such a project shall be planned and installed.

FEATURES

ANTIDRIP SYSTEM Weldable PVC profile on the upper part of the canvas for lateral rainwater retention. This PVC profile is welded to each far side of a pitched roof canopy to prevent water from dripping over the sides and forces the water to shed into the gutter system.

ANTISPRAY PROFILE PVC profile inserted on the lateral side of the runner for retention of rainwater spray. Always in addition to the ANTIDRIP SYSTEM. The AntiSpray prevents water from a heavy downpour from "splashing" over the AntiDrip profile and dripping over the sides.

INTEGRATION The Impact is very unique in that it can be installed into pre-existing and custom designed frames.

MOTOR BEAM Aluminum profile and corresponding accessories to be fixed to self-supporting motor or, in addition, to support the protective cover.

MOTORIZATION All Pergotenda® are motorized, giving you complete control at the touch of a button.

OPTIONS

ADD-ON INTERMEDIATE SUPPORT TUBE Used to reduce the height of the canopy swag when the roof unit is retracted, usually for purposes of clearing a door opening or a window. Only two (2) tubes total may be added to any single roof canopy.

ADD-ON RUNNER The mechanical Runner is the equivalent of roof truss or rafter and is what the roof canopy is attached to. Adding a Runner is considered when the roof pitch angle needs to be reduced to properly shed water and manage it into the gutter systems. Adding a runner may also be considered to reduce the pitch of the roof for design purposes as well.

FAUX CEILING A unique option that hangs a colorful fabric beneath the roofing material to add warmth and atmosphere to the room. The Faux Ceiling fabric can provide for an excellent opportunity to blend other colors or materials that are part of furnishings or cushions. The softer fabric material may also be a benefit in reducing noise or providing other minimal acoustic properties to dampen surrounding noise. This option will depend on the type of fabric. The Faux Ceiling fabric generally must be from the Corradi USA collection or an approved alternate.

HOOD The Protective Hood Cover is an aluminum corrugated standing seam cover that is positioned where the unit mounts to the wall or at the back of the unit on a Freestanding model for the purpose of protecting the Roof Canopy Swags that are created when the roof retracts and to prevent any water or debris from collecting in the swags. The Protective Hood Cover is powder coated for longevity.

LIGHTING The Pergotenda® lighting system is a custom designed system that seamlessly integrates into the Pergotenda® intermediate tubes.

PITCHED OR FLAT Both pitched (angled) roof and flat roof options are available for the Impact.

RETRACTABLE GUTTER Extruded aluminum profile for rainwater collection, only for pitched versions, fixed to the end support tube. One drainage per runner. Down pipes not provided. The gutters moves with the roof canopy and has downspouts that merge into a CNC cut in each front supporting post.

TRAPEZOIDAL FABRIC (flat versions only) An alternative drainage option for flat systems to let you control which side of the system you want rain to fall off.

UNDERSIDE DRIP-COLLECTION RIM (flat versions only) Welded PVC profile on the underside of the roof canopy to channel water into the side gutters and to prevent water from running along the underside of the roof canopy and dripping down.

FRAME COLORS

POWDER COATING*

The aluminum extrusions are painted with certified Qualicoat cycle epoxy powders. The support tubes come in: White Quartz, Glacier, & Beach Sand to match with the Eclissi fabric.



*RAL CUSTOM COLOR POWDER COATING IS ALSO AVAILABLE
Due to print variation these finish images should not be used for final production specifications.

FABRICS

ECLISSI BLACKOUT FABRIC

Eclissi fabric is exclusively used by Corradi USA for Pergotenda® structures. It is a High tenacity 1100 Dtex Polyester base fabric with PVC laminate. The embossed finish on the inner side gives a textile appearance and a dynamic weft effect on the viewable surface. The outer side has an anti-dust acrylic lacquer. This unique 4-ply material has a blackout layer that also acts as a radiant barrier, providing superior heat resistance and heat gain as compared to other textiles used in these types of applications. It is available in 3 colors:



OTHER RETRACTABLE ROOF FABRICS AVAILABLE

SERGE FERRARI SOLTIS PROOF W96

See Fabrics section pg. 155 for more information on this fabric.

SERGE FERRARI SOLTIS PROOF 502

See Fabrics section pg. 155 for more information on this fabric.

SERGE FERRARI SOLTIS PERFORM 92

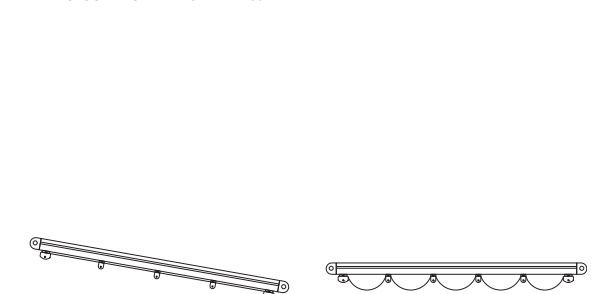
See Fabrics section pg. 155 for more information on this fabric.

SERGE FERRARI SOLTIS HORIZON 86

See Fabrics section pg. 155 for more information on this fabric.

MOTORS

RADIO CONTROLLED DUNKER D839



PITCHED MAX DIMENSIONS

	Width	Projection
2 runner	197"	354"
3 runner	354"	354"
4 runner	512"	354"
5 runner*	512"	354"

FLAT MAX DIMENSIONS

	Width	Projection
2 runner	197"	354"
3 runner	315"	354"
4 runner	472"	354"

*5 runner available pitched only

Note: when pitched and has 4 to 5 runners, system will require 2 motors.

