

Awnings

THE
outdoor
ALCHEMIST



Corradi
OUTDOOR LIVING SPACE

Time to...

**Embrace the
Art of Shade**

- 2. Our Solutions
- 4. Awnings
 - 7. Klip and Klip Pod
 - 13. Svet
 - 17. Shan
 - 21. Feng
 - 25. Frame
- 29. Defense Shade Sail
- 32. Fabric Collection
- 34. Motorization
- 36. Product Comparison Overview
- 39. Why Corradi?



Redefining Outdoor Living

Exceptional Quality and Protection

Versatile and Customizable Designs

Energy Efficiency & Environmental Consciousness

Experience the boundless potential of your outdoor space with Corradi USA. Whether you're looking to create a comfortable oasis in your backyard, protect your customers from the elements at your restaurant, or add a touch of luxury to a public space, our comprehensive line of shading products has you covered.

From retractable pergolas, screens, and awnings, to shade sails and louvered roofs, our products are designed to seamlessly integrate into any exterior environment. Transform your outdoor patio into a living space to be enjoyed all year round.



Awnings

Shade and the Art of Optimizing It

Corradi Shading systems bring style and function to outdoor spaces, transforming them into refined, usable environments. From the modern design of the Shan Awning to the nautical elegance of the Defense Shade Sail, our premier awning collection redefines outdoor living, offering lasting comfort, architectural beauty, and protection from the sun.



Klip



Svet



Feng



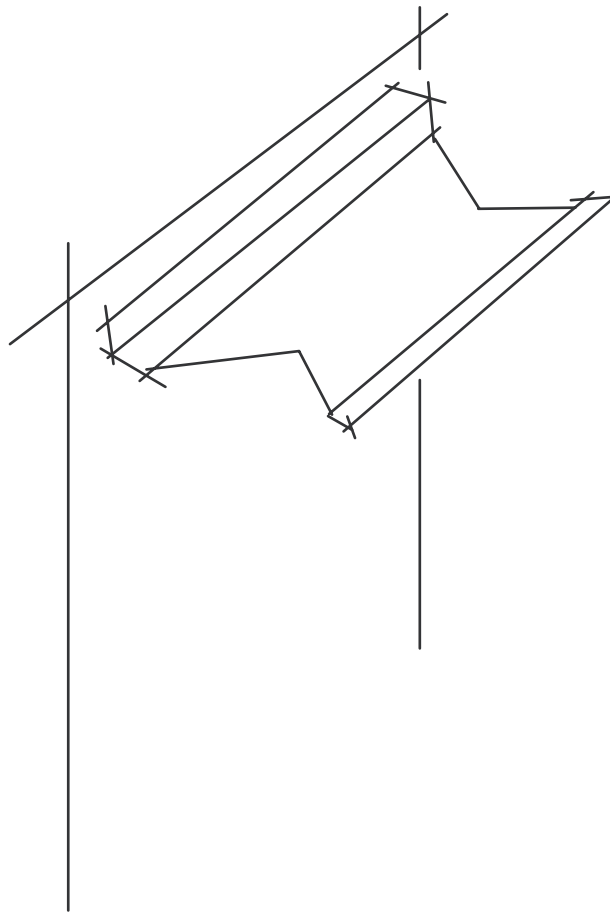
Shan



Frame



Defense





Klip & Klip Pod

Retractable Awning
by ShadeLab



A retractable awning featuring distinctive square and round profiles for a clean, balanced look. Available with an optional hood to protect the fabric and a Pod version offering an integrated semi-cassette for enhanced durability.



Klip | Ross Howard



KLIP Technical Data



Klip reimagines the classic open-roll awning through advanced engineering and the integration of square and curved profiles. Its innovative components ensure smooth operation and flexible installation options, including roof bracket compatibility and an optional protective hood. Adaptable to a variety of design needs, Klip transforms a once purely functional product into a design-forward shading solution that adds both comfort and character to outdoor spaces.

Features

- » OPEN ROLL AWNING
- » MOTORIZED OR MANUAL OPERATION
- » CONTINUOUS MICROMETRIC PITCH REGULATION
- » AVAILABLE WITH PROTECTIVE HOOD
- » 316 GRADE STAINLESS STEEL SCREWS AND PINS
- » WALL, CEILING, OR ROOF INSTALLATION
- » PATENTED ITALIAN DESIGN

ARM SIZE & WIDTH RANGE

Projection*	Max. Width	Style
6'6" (78")	360" / 30'	Urban
8'4" (100")	360" / 30'	Urban
10' (120")	360" / 30'	Urban
11'6" (138")	360" / 30'	Katana

*Maximum projection indicated is calculated with arms at 0° pitch, perpendicular to the mounted wall. Increasing the pitch will decrease the projection when measured in a straight/perpendicular line from the mounted wall.

MINIMUM WIDTH PER ARM COUNT

Projection*	2 Arms	3 Arms	4 Arms
6'6" (78")	102"	149"	195"
8'4" (100")	122"	178"	241"
10' (120")	148"	214"	280"
11'6" (138")	167"	243"	319"

MOTOR

SOMFY® ALTUS RTS

MANUAL

GEAR & CRANK (20' MAX WIDTH)



FRAME COLORS

POWDER COATING* **

Aluminum extrusions are painted with certified Qualicoat cycle epoxy powders.



*Custom RAL colors also available.

Plastic parts are only available in limited colors.

Differences in color tones may occur in this brochure due to production technique, therefore these finish images should not be used for final production specifications.

FABRICS

Corradi USA offers the highest quality of fabrics for retractable awnings.

TEMPOTEST® AWNING FABRICS

Vibrant and durable solution-dyed acrylic fabrics.

SUNBRELLA SHADE FABRICS

Available Upon Request

URBAN ARM: An unprecedented retractable arm design made from the highest quality raw materials and the advanced technology of the **DAT SYSTEM** (Dynamic Arm Torsion System) come together to make the Urban arm a masterpiece.

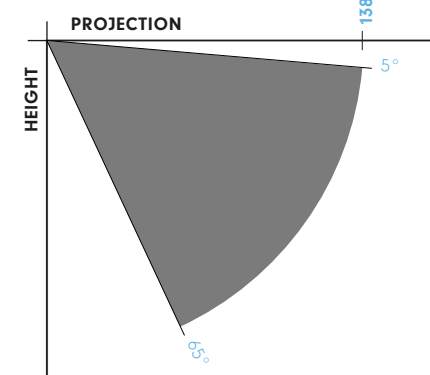
KATANA ARM: Specifically designed for larger projections (11'6" and 13'6"). All of Katana's differences are internal as the exterior look and smooth function of the Katana arm is identical to Urban.



The distance between fabric and arm increases when deployed to protect the fabric.



PITCH





Klip Pod | Budget Blinds of Wichita Falls



KLIP POD Technical Data



Klip Pod is the semi-cassette version of the Klip awning, developed to offer enhanced fabric protection in a sleek, rounded case. This integrated case shields the fabric when retracted from rain and debris, eliminating the need for a separate hood. The rounded front bar completes the streamlined look, balancing practicality and design. Like Klip, Klip Pod supports roof-mounted applications, providing versatile installation options to suit a wide range of architectural styles and project requirements.

Features

- » SEMI-CASSETTE AWNING
- » MOTORIZED OPERATION
- » CONTINUOUS MICROMETRIC PITCH REGULATION
- » 316 GRADE STAINLESS STEEL SCREWS AND PINS
- » WALL, CEILING, OR ROOF INSTALLATION
- » PATENTED ITALIAN DESIGN

ARM SIZE & WIDTH RANGE

Projection*	Max. Width	Style
6'6" (78")	212" / 17'8"	Urban
8'4" (100")	212" / 17'8"	Urban
10' (120")	212" / 17'8"	Urban
11'6" (138")	212" / 17'8"	Katana

*Maximum projection indicated is calculated with arms at 0° pitch, perpendicular to the mounted wall. Increasing the pitch will decrease the projection when measured in a straight/perpendicular line from the mounted wall.

MINIMUM WIDTH PER ARM COUNT

Projection*	2 Arms
6'6" (78")	102"
8'4" (100")	122"
10' (120")	148"
11'6" (138")	167"

MOTOR

SOMFY® ALTUS RTS



FRAME COLORS

POWDER COATING* **

Aluminum extrusions are painted with certified Qualicoat cycle epoxy powders.



*Custom RAL colors also available.
Plastic parts are only available in limited colors.
Differences in color tones may occur in this brochure due to production technique, therefore these finish images should not be used for final production specifications.

FABRICS

Corradi USA offers the highest quality of fabrics for retractable awnings.

TEMPOTEST® AWNING FABRICS

Vibrant and durable solution-dyed acrylic fabrics.

SUNBRELLA SHADE FABRICS

Available Upon Request

URBAN ARM: An unprecedented retractable arm design made from the highest quality raw materials and the advanced technology of the **DAT SYSTEM** (Dynamic Arm Torsion System) come together to make the Urban arm a masterpiece.

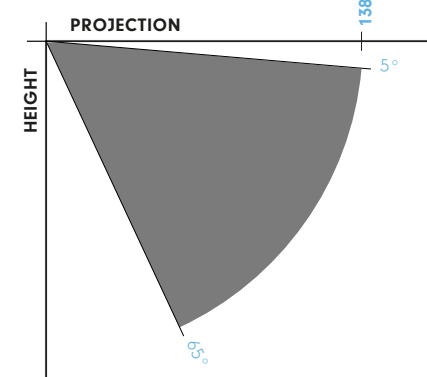
KATANA ARM: Specifically designed for larger projections (11'6" and 13'6"). All of Katana's differences are internal as the exterior look and smooth function of the Katana arm is identical to Urban.



The distance between fabric and arm increases when deployed to protect the fabric.



PITCH



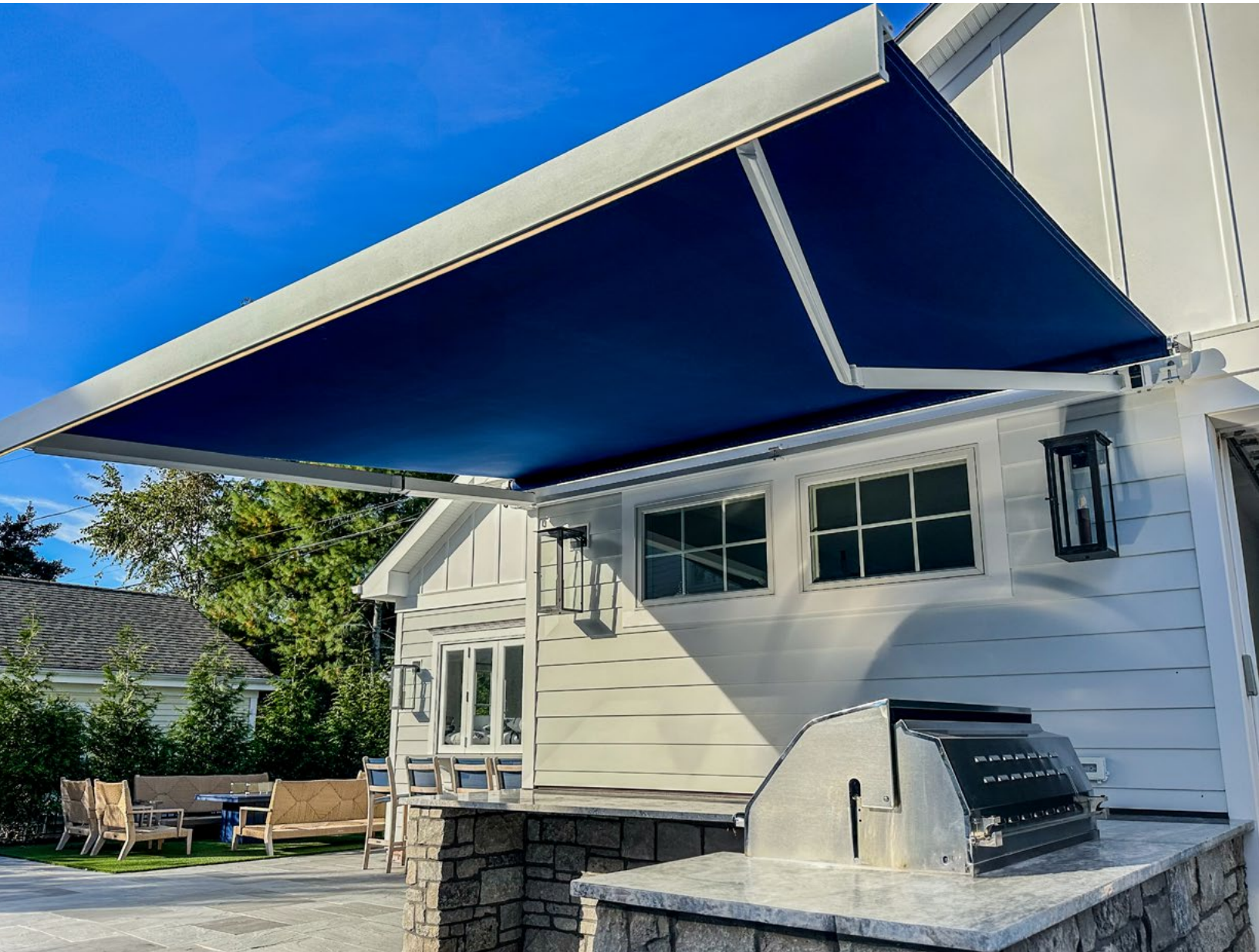


Svet

Retractable Awning by ShadeLab



A design-forward awning defined by its bold square front bar and refined structural details. Its high-performance features make it a superior solution that complements both contemporary and traditional architecture. Optional LED lighting adds a modern touch, extending the use of outdoor spaces into the evening.



Svet | Opdyke Awning, Inc.



SVET Technical Data



Svet is a true original, designed to meet the demands of both residential and commercial spaces. Integrated stainless-steel hardware and an embedded roll tube bracket create a minimalist profile that eliminates visual clutter. Offering reliable coverage with flexible installation options, including roof mounting, Svet adapts seamlessly to a wide range of applications. With widths up to 30 feet and optional LED lighting on the front bar, it delivers both scale and versatility.

Features

- » OPEN ROLL AWNING
- » MOTORIZED WITH CMO (CONTROL MOTOR OVERRIDE) OPTION
- » CONTINUOUS MICROMETRIC PITCH REGULATION
- » AVAILABLE WITH PROTECTIVE HOOD
- » 316 GRADE STAINLESS STEEL SCREWS AND PINS
- » WALL, CEILING, OR ROOF INSTALLATION
- » FRONT BAR LED LIGHT OPTION
- » PATENTED ITALIAN DESIGN

WIDTH RANGE

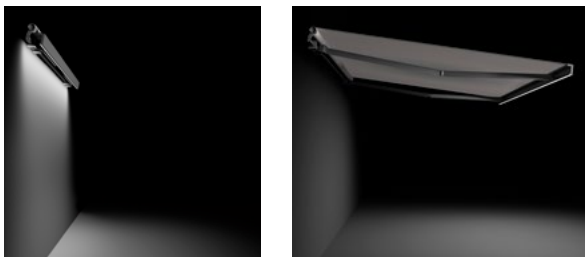
Projection*	Max. Width	Style
6'6" (78")	360" / 30'	Urban
8'4" (100")	360" / 30'	Urban
10' (120")	360" / 30'	Urban
11'6" (138")	360" / 30'	Katana
13'6" (162")	360" / 30'	Katana

*Maximum projection indicated is calculated with arms at 0° pitch, perpendicular to the mounted wall. Increasing the pitch will decrease the projection when measured in a straight/perpendicular line from the mounted wall.

MINIMUM WIDTH PER ARM COUNT

Projection*	2 Arms	3 Arms	4 Arms
6'6" (78")	100"	146"	191"
8'4" (100")	119"	175"	240"
10' (120")	148"	214"	279"
11'6" (138")	168"	243"	319"
13'6" (162")	190"	276"	362"

OPTIONAL LEDS AVAILABLE FOR SVET FRONT BAR



FRAME COLORS

POWDER COATING* **

Aluminum extrusions are painted with certified Qualicoat cycle epoxy powders.



*Custom RAL colors also available.
 Plastic parts are only available in limited colors.
 Differences in color tones may occur in this brochure due to production technique, therefore these finish images should not be used for final production specifications.

FABRICS

Corradi USA offers the highest quality of fabrics for retractable awnings.

TEMPOTEST® AWNING FABRICS

Vibrant and durable solution-dyed acrylic fabrics.

SUNBRELLA SHADE FABRICS

Available Upon Request

URBAN ARM: An unprecedented retractable arm design made from the highest quality raw materials and the advanced technology of the **DAT SYSTEM** (Dynamic Arm Torsion System) come together to make the Urban arm a masterpiece.

KATANA ARM: Specifically designed for larger projections (11'6" and 13'6"). All of Katana's differences are internal as the exterior look and smooth function of the Katana arm is identical to Urban.



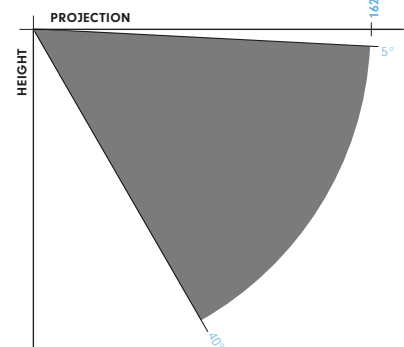
The distance between fabric and arm increases when deployed to protect the fabric.



MOTOR

SOMFY® ALTUS RTS. Override CMO is available

PITCH





Shan

Retractable Awning

by ShadeLab



A state-of-the-art awning featuring a square, fully enclosed cassette design that combines architectural elegance with powerful performance. Its streamlined form integrates seamlessly with contemporary and traditional settings, complementing a wide range of styles while enhancing spaces with shade and visual appeal.



SHAN Technical Data



Shan is more than an awning, it's an architectural feature that brings structure, shade, and sophistication to the outdoors. Its traditional square cassette mounts directly to the wall, fully enclosing all components for added protection and a clean, modern appearance. Equipped with a torque-sensing motor, Shan ensures smooth, precise closure, preserving its sleek silhouette. A signature in exterior shading, Shan stands apart with its elevated design and advanced sun control. Its polished shape and purposeful engineering make it a preferred choice for residential backyards and commercial patios, locations where both performance and luxury are essential.

Features

- » FULL CASSETTE AWNING
- » ACQUASTOP SYSTEM
- » MOTORIZED ONLY
- » CONTINUOUS MICROMETRIC PITCH REGULATION
- » 316 GRADE STAINLESS STEEL SCREWS AND PINS
- » WALL MOUNT ONLY
- » PATENTED ITALIAN DESIGN
- » RED DOT DESIGN AWARD WINNER

WIDTH RANGE

Projection*	Max. Width	Style
6'6" (78")	240" / 20'	Urban
8'4" (100")	240" / 20'	Urban
10' (120")	240" / 20'	Urban
11'6" (138")	240" / 20'	Katana
13'6" (162")	240" / 20'	Katana

*Maximum projection indicated is calculated with arms at 0° pitch, perpendicular to the mounted wall. Increasing the pitch will decrease the projection when measured in a straight/perpendicular line from the mounted wall.

MINIMUM WIDTH PER ARM COUNT

Projection*	2 Arms
6'6" (78")	97"
8'4" (100")	117"
10' (120")	137"
11'6" (138")	159"
13'6" (162")	179"

MOTOR

SOMFY® OREA RTS



FRAME COLORS

POWDER COATING* **

Aluminum extrusions are painted with certified Qualicoat cycle epoxy powders.



*Custom RAL colors also available.

Plastic parts are only available in limited colors.

Differences in color tones may occur in this brochure due to production technique, therefore these finish images should not be used for final production specifications.

FABRICS

Corradi USA offers the highest quality of fabrics for retractable awnings.

TEMPOTEST® AWNING FABRICS

Vibrant and durable solution-dyed acrylic fabrics.

SUNBRELLA SHADE FABRICS

Available Upon Request

URBAN ARM: An unprecedented retractable arm design made from the highest quality raw materials and the advanced technology of the **DAT SYSTEM** (Dynamic Arm Torsion System) come together to make the Urban arm a masterpiece.

KATANA ARM: Specifically designed for larger projections (11'6" and 13'6"). All of Katana's differences are internal as the exterior look and smooth function of the Katana arm is identical to Urban.

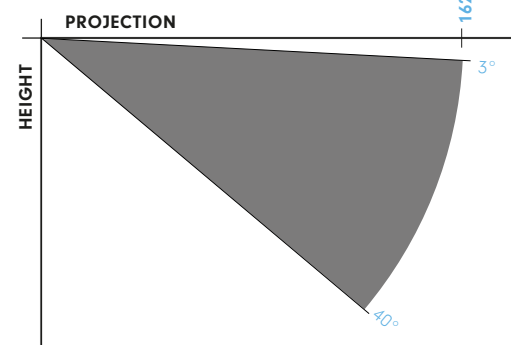


The distance between fabric and arm increases when deployed to protect the fabric.



ACQUASTOP SYSTEM: Favors a perfect adherence of the cassette to the wall, blocking the flow of water in case of rain.

PITCH

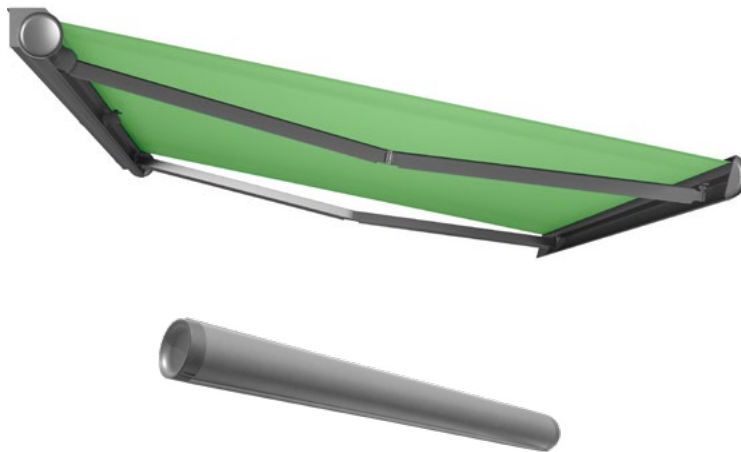




Feng

Retractable Awning

by ShadeLab



A distinguishing round cassette awning that delivers exceptional shade with sculptural presence, both visually striking and functionally advanced. Optional LED lighting, available on the cassette and arms, makes outdoor areas inviting and usable long after sunset.



Feng | Artivo Window Coverings



OPTIONAL LEDS AVAILABLE FOR FENG
ARMS & CASSETTE



FENG Technical Data



Breaking away from conventional shading solutions, the **Feng** awning features a bold circular cassette design that blends architectural elegance with advanced functionality. Its unique form creates a compelling visual statement, elevating any outdoor environment with sculptural beauty. Optional LED lighting available on the cassette and arms adds ambiance and usability after dark, making outdoor living spaces comfortable well into the evening. Created for durable sun protection with a modern look, it offers lasting performance that complements sophisticated outdoor settings.

Features

- » FULL CASSETTE AWNING
- » ACQUASTOP SYSTEM
- » MOTORIZED ONLY
- » CONTINUOUS MICROMETRIC PITCH REGULATION
- » 316 GRADE STAINLESS STEEL SCREWS AND PINS
- » WALL MOUNT ONLY
- » ARM LED LIGHT OPTION
- » CASSETTE LED LIGHT OPTION
- » PATENTED ITALIAN DESIGN
- » RED DOT DESIGN AWARD WINNER

ARM SIZE & WIDTH RANGE

Projection*	Max. Width	Style
6'6" (78")	240" / 20'	Urban
8'4" (100")	240" / 20'	Urban
10' (120")	240" / 20'	Urban
11'6" (138")	240" / 20'	Katana

*Maximum projection indicated is calculated with arms at 0° pitch, perpendicular to the mounted wall. Increasing the pitch will decrease the projection when measured in a straight/perpendicular line from the mounted wall.

MINIMUM WIDTH PER ARM COUNT

Projection*	2 Arms
6'6" (78")	105"
8'4" (100")	123"
10' (120")	144"
11'6" (138")	162"

MOTORIZATION

SOMFY® OREA RTS



FRAME COLORS

POWDER COATING* **

Aluminum extrusions are painted with certified Qualicoat cycle epoxy powders.



*Custom RAL colors also available.

Plastic parts are only available in limited colors.

Differences in color tones may occur in this brochure due to production technique, therefore these finish images should not be used for final production specifications.

FABRICS

Corradi USA offers the highest quality of fabrics for retractable awnings.

TEMPOTEST® AWNING FABRICS

Vibrant and durable solution-dyed acrylic fabrics.

SUNBRELLA SHADE FABRICS

Available Upon Request

URBAN ARM: An unprecedented retractable arm design made from the highest quality raw materials and the advanced technology of the **DAT SYSTEM** (Dynamic Arm Torsion System) come together to make the Urban arm a masterpiece.

KATANA ARM: Specifically designed for larger projections (11'6" and 13'6"). All of Katana's differences are internal as the exterior look and smooth function of the Katana arm is identical to Urban.

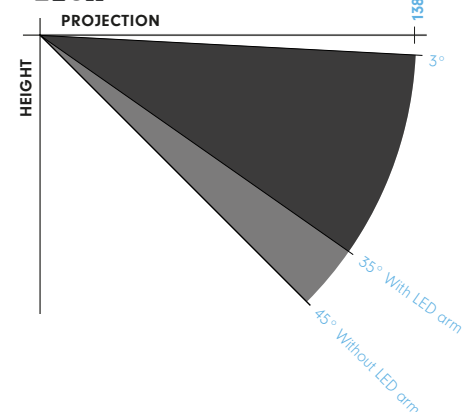


The distance between fabric and arm increases when deployed to protect the fabric.



ACQUASTOP SYSTEM: Favors a perfect adherence of the cassette to the wall, blocking the flow of water in case of rain.

PITCH





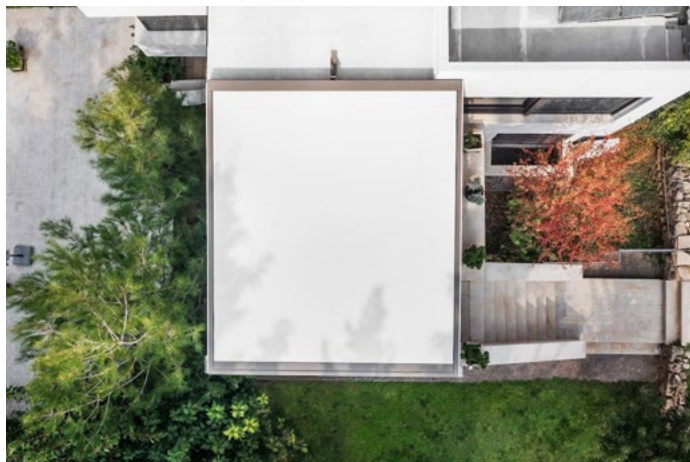
Frame

Retractable Awning

by ShadeLab



A shade that redefines overhead coverage through a unique horizontal design, replacing traditional retractable arms with advanced tensioned tracks. Engineered for versatility, it adapts to a wide range of applications, including skylights, and offers an optional front support stand, making it ideal for both residential and commercial settings.



FRAME Technical Data



Frame's innovative tensioning system integrates gas pistons, a high-strength drive belt, and a cassette to deliver smooth operation and long-lasting durability. Primarily designed for solar protection, it also offers rain resistance when the fabric features zippered edges and is installed with adequate pitch. Its versatility makes it an excellent solution for skylight applications, where overhead coverage and reliable performance are essential. Installation options are flexible: Frame can be mounted on horizontal or pitched surfaces using one of three available brackets or combined with the optional Frame Stand, a front support structure ideal for wall-mounted projects. The front profile completes the perimeter and aligns with the front bar when projected, improving both the stability and distinctive design that sets Frame apart.

Features

- » **MOTORIZED ONLY**
- » **RAIN PROTECTION WITH WATERPROOF FABRICS, ZIPPER EDGES, AND SUFFICIENT PITCH**
- » **FRONT SUPPORTING STAND WITH OPTION TO CANTILEVER UP TO 3 FEET**
- » **WALL MOUNT OR INSTALLED ON PRE-DESIGNED OR EXISTING STRUCTURES**
- » **BRACKETS AND FEET (3.4" OR ADJUSTABLE 4"-16'4") PROVIDED**
- » **TENSIONED GAS PISTONS**
- » **316 GRADE STAINLESS STEEL SCREWS AND PINS**
- » **PATENTED ITALIAN DESIGN**
- » **360 INSTALLATION CAPABILITY**

Frame open and closed
Maximum Size 196" (16'4") x 196" (16'4")



Frame with Stand open and closed
Maximum Size 196" (16'4") x 196" (16'4")



FRAME COLORS

POWDER COATING* **

Aluminum extrusions are painted with certified Qualicoat cycle epoxy powders.



*Custom RAL colors also available.

Plastic parts are only available in limited colors.

Differences in color tones may occur in this brochure due to production technique, therefore these finish images should not be used for final production specifications.

FABRICS

TEMPOTEST® AWNING FABRICS

Most Para Tempotest Awning fabrics can be used up to a 14'10" (180") x 14'10" (180") maximum size on the Frame.

SERGE FERRARI

Précontraint tension vinyl and solar protection fabrics.

SOLTIS HORIZON 86

SOLTIS PERFORM 92

SOLTIS PROOF 502 (WATERPROOF)

SOLTIS HARMONY 88

SOLTIS PROOF W88 & W96 (WATERPROOF)

SUNBRELLA SHADE FABRICS

Available Upon Request

MOTORS

SOMFY® ALTUS RTS



Defense

Shade Sail



Inspired by nautical engineering and constructed with marine-grade materials, this freestanding solution provides stylish solar protection. Retractable triangular sails made from UV-protected Dacron[®] extend from a curved stainless steel frame, combining a minimalistic yet elegant appearance.



Defense Shade Sail | Outdoor Living Solutions



DEFENSE Technical Data



FRAME



STAINLESS STEEL ONLY

FABRIC



DACRON CANVAS
WHITE ONLY

Differences in color tones may occur in this brochure due to production technique, therefore these finish images should not be used for final production specifications.

MOTORIZATION

SOMFY 535 CMO (MOTOR OVERRIDE) ONLY

EOLIS RTS WIND SENSOR

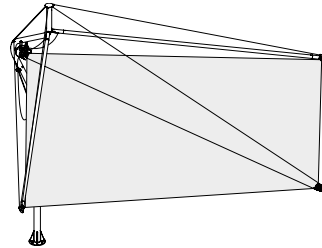
Drawing from the aesthetics and techniques of sailing, the **Defense** features two triangular sails that extend from a horizontal mast capable of rotating 360°, providing dynamic shade control throughout the day. With motorized operation, the shade can easily project and retract at the push of a button. The system includes an anemometer that automatically retracts the fabric in high winds, plus a manual override for power outages. Installation options include an in-ground pole or a ballasted base, providing adaptable installation options for diverse settings. Supported by tensioned ropes and stainless steel arms, the Defense Shade Sail embodies a modern take on solar protection while honoring nautical craftsmanship.

3 installation options:

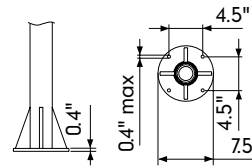
Anchored to the ground is the standard solution (anchors not supplied), counter plate with prongs embedded in concrete plinth, or ballasted base with optional stainless steel cover. (Ballast blocks not supplied.)

Features

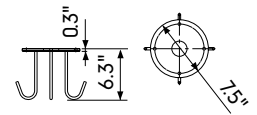
- » SELF-SUPPORTING SHADE SAIL
- » NAUTICAL DESIGN, TECHNOLOGY & COMPONENTS
- » 3 INSTALLATION OPTIONS AVAILABLE
- » SALINITY AND WEAR RESISTANT
- » BRUSHED/POLISHED STAINLESS STEEL FINISH
- » STAINLESS STEEL CLEANING KIT PROVIDED
- » CMO OPERATION (Control Motor Override)
- » ANEMOMETER INCLUDED
- » 360° ROTATION
- » LOW MAINTENANCE



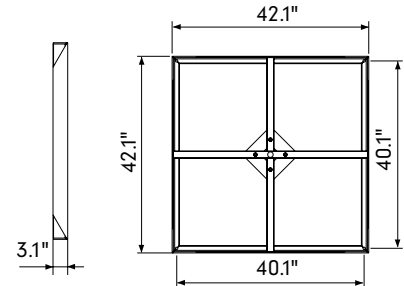
GROUND POLE



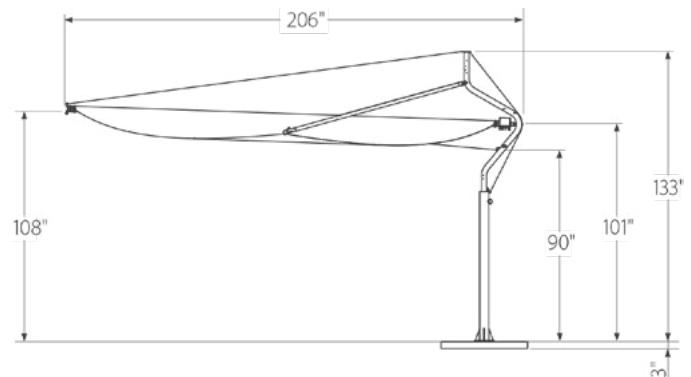
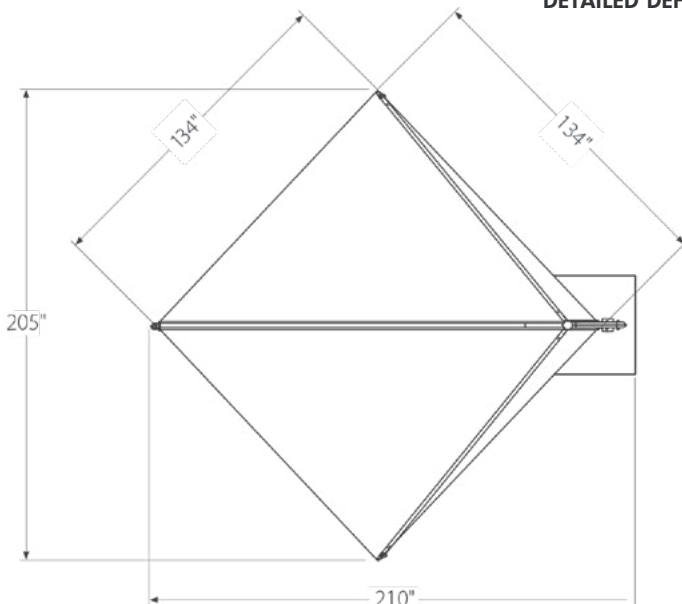
IN-GROUND COUNTER PLATE



BALLASTED BASE



DETAILED DEFENSE MEASUREMENTS





Tempotest® Awning Fabrics

Art is a journey. During the pursuit of perfection, Para Tempotest discovers the very things worth appreciating. With tones, textures and colors that ignite the senses, art hints at what true beauty can be and reminds us that the journey is just as important as the destination. Each design in their collection is a piece of art unto itself evoking feeling from the observer and telling the story of the artist.

Whatever your story, Tempotest can help you tell it.

Corradi USA's #1 fabric choice for awnings, Tempotest® USA has a stunning selection of solid color acrylic fabrics applicable for awnings, clear vinyl window borders or full exterior screen coverage. These fabrics are created for outdoor living solar protection and custom style.



Solar Heat Protection indicates the % of solar heat & infrared rays that a fabric will reflect and absorb. All the fabrics in the Tempotest Collection offer at least 74% solar heat protection.

Darker patterns typically offer better heat protection. If maximizing the decrease in temperature under the awning is a priority, pick relatively dark tones. Dark colored fabrics absorb more heat than light colored fabrics, so if the specific applications does not allow for proper headroom, than a lighter fabric will actually 'feel' cooler as you get closer to the fabric.



Solar Light Protection indicates the % of solar light a fabric will reflect and absorb.

Darker patterns typically minimize sun glare the most while lighter fabrics will keep the area under the awning brighter.

- Most comprehensive collection of stylish colors (including striped and solid options)
- Protection from the sun's harsh UV rays
- Long-term strength and durability
- Fade-resistant solution-dyed fiber
- Teflon® Extreme by Para coating for water and oil repellency
- Resistant to mold, stains, salt, and UV fading
- Easy maintenance

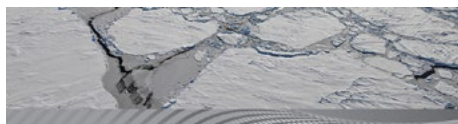


Teflon® Extreme by Para



Hi-Clean Finishing

www.tempotestusa.com



FABRIC COLLECTION

Dacron Shade Sail Fabric

Offered for Defense Shade Sail Only

Available in White Only

100% Polyester

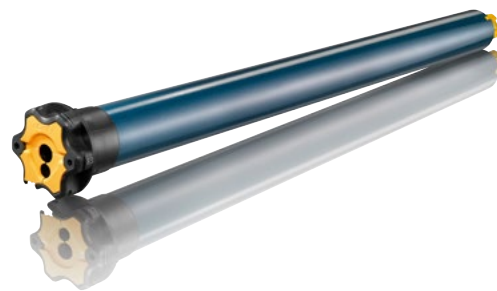
Water Repellant with Anti-UV Finish





Whether you want to control your exterior solar screens and outdoor shading systems at the touch of a button or use automated systems, Somfy® has the solution for all of your motorization needs.

Somfy®, the world's leading manufacturer of tubular motors, has more than four decades of experience in designing and manufacturing motors and controls, making **Radio Technology Somfy® (RTS)** the ultimate choice for the automation of exterior solar screens and outdoor shading systems. Radio Technology Somfy® (RTS) offers a high performing, reliable solution for exterior solar screen and outdoor shading motorization. Since the radio receiver is integrated within the motor, making RTS the ideal choice for hassle-free installation and quick and easy operation.



SENSORS



Sunis RTS Sensor

This battery-operated, outdoor sensor automatically adjusts Somfy® powered exterior products based on the sun's intensity.

Eolis RTS Sensor

The Eolis RTS Wind Sensor automatically controls RTS motorized products based on current wind conditions.

Eolis 3D RTS Sensor

The Eolis 3D WireFree™ RTS Wind Sensor is a wireless, battery powered wind sensor that will automatically retract an awning based on wind generated movements.

Soliris RTS Sensor

The Soliris RTS Sun and Wind Sensor automatically controls your RTS motorized products based on current weather conditions.

TIMER



Chronis RTS Timer

The Telis 1 Chronis RTS combines the functionality of a single channel hand-held control with the convenience of a programmable timer. This control option is compatible with all motorized Radio Technology Somfy® applications and offers simple programming and easy operation.

AUTOMATION CONNECTIVITY



TaHoma® RTS/Zigbee Smartphone and Tablet Interface

TaHoma® is a WiFi to RTS gateway that can control up to 40 RTS channels. Create scenes and schedules using an app while home or away, or integrate with third-party systems. TaHoma works with Google Assistant and Amazon Alexa, allowing for natural voice commands to control shades.

CONTROLS



RTS Remotes

The RTS remote is a convenient hand-held remote for use with any motorized product featuring Radio Technology Somfy®. It is available in a variety of colors and channels. (1 channel, 4 channel, 16 channel)

Soliris 5 Channel Remote

The Telis Soliris RTS is a hand-held remote to operate awnings, screens and shutters featuring Radio Technology Somfy®. It also has the added feature of activating an RTS sun sensor remotely.

Decoflex Wall Switch Remote

The DecoFlex WireFree™ RTS is battery-powered and a completely wireless wall switch that provides an ideal way to control motorized products when entering or exiting a room. It is compatible with all Radio Technology Somfy® motorized products and is available in a variety of colors and channels.

MOTOR CORDS

Somfy® offers many options for motor cords, including RTS vs. standard and plug vs. no plug. The standard cord length for Somfy® Motors is 6' without a plug. Additional sizes available upon request.

MOTORIZED VS. MANUAL OPERATION: CHOOSING THE RIGHT SYSTEM FOR YOUR OUTDOOR SPACE

Choosing between motorized and manual outdoor shading systems starts with understanding how each option works and what it can offer in terms of performance and convenience.

Today's motorized systems go beyond simple functionality. With features like sun and wind sensors, and the ability to integrate with smart home platforms, controlling your outdoor shades becomes effortless. Whether you're looking to enhance comfort, protect your space from the weather, or simply enjoy the ease of automation, motorized operation delivers a seamless experience.

At Corradi USA, we're committed to quality and innovation. That's why we use **Somfy® Motors**, a leader in motorized technology, across our product lines, including all awning styles.

For smaller spaces or locations without access to power, the Klip model includes a manual option using a hand crank. While motorized operation remains the preferred choice for convenience and efficiency, the manual version provides a reliable alternative when automation isn't feasible.

Operation Type	Highlights	Ideal For
Motorized	Automated sensors, smart home integration, remote control	Effortless comfort, weather protection, modern living
Manual	Simple crank mechanism, no power required	Smaller spaces, budget-conscious solutions, basic functionality

WHY MOTORIZED?

Necessity. Some awnings are only available motorized due to size, weight, and frequent use.

Convenience. Simple control at the touch of a button.

Value & Efficiency. Motorized systems are used more often due to their ease of use, especially with multiple units. The added cost is minimal, making them a practical option.

Automation & Lifestyle. Weather-responsive sensors and smart home integration make outdoor shading effortless and adaptive, perfectly suited for modern-day comfort.

Price and reliability. The cost of adding a motorized solution to your shading system is not a significant cost in terms of the overall cost of the system. The motors offered today have the latest technology that has been developing for over 30 years worldwide. The functionality and warranties offered with motorization options today make this an easy purchasing decision.

Product Comparison Overview



Klip / Klip Pod



Svet

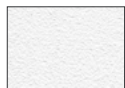


Shan



Max Size (width x projection)	Klip: 30'(360") x 11'6"(138") Klip Pod: 17'8"(212") x 11'6"(138")	30'(360") x 13'6"(162")	20'(240") x 13'6"(162")
Pitch Range	5° - 65°	5° - 40°	3° - 40°
Available Fabrics	Most Tempotest Awning Fabrics Sunbrella (Upon Request)	Most Tempotest Awning Fabrics Sunbrella (Upon Request)	Most Tempotest Awning Fabrics Sunbrella (Upon Request)
Method of Operation	Manual (Klip Only) or Motorized	Motorized with CMO Option	Motorized Only
Installation Types	Wall, Roof, or Ceiling/Soffit Mount	Wall, Roof, or Ceiling/Soffit Mount	Wall Mount Only
Motor Type	Somfy® Altus RTS	Somfy® Altus RTS	Somfy® Orea RTS (Torque Sensing)
Smart Control Technology	Wind & Sun Sensors with Home Automation Capability	Wind & Sun Sensors with Home Automation Capability	Wind & Sun Sensors with Home Automation Capability
Additional Options	Protective Hood (Klip Only)	Protective Hood & LEDs on Front Bar	-
Product Warranty	5 years	5 years	5 years

Standard Frame Colors



WHITE QUARTZ



ANTHRACITE



CARBON



GLACIER



BEACH SAND



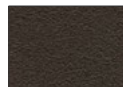
DUNE



GRANITE



CORTEN



URBAN BRONZE

Defense Frame Color

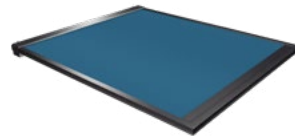


BRUSHED STAINLESS STEEL

Differences in color tones may occur in this brochure due to reproduction technique, therefore these finish images should not be used for final production specifications.



Feng



Frame



Defense



	Feng	Frame	Defense
Max Size (width x projection)	20'(240") x 11'6"(138")	16'4"(196") x 16'4"(196")	11'2"(134") x 11'2"(134")
Pitch Range	3° - 45° Without LED Arms 3° - 35° With LED Arms	360°	No pitch. 360° rotation.
Available Fabrics	Most Tempotest Awning Fabrics Sunbrella (Upon Request)	Most Tempotest Awning Fabrics (Up to 14'10"x14'10") & Serge Ferrari Soltis Collection	Dacron (White Only)
Method of Operation	Motorized Only	Motorized Only	Motorized Only
Installation Types	Wall Mount Only	Wall mount with optional front supporting stand or mounted onto pre-designed/existing structures.	Ground pole, in-ground counter plate, or ballasted base (all freestanding).
Motor	Somfy® Orea RTS (Torque Sensing)	Somfy® Altus RTS	Somfy® 535 RTS CMO
Smart Control Technology	Wind & Sun Sensors with Home Automation Capability	Wind & Sun Sensors with Home Automation Capability	Wind & Sun Sensors with Home Automation Capability
Additional Options	LEDs on Cassette & Arms	Zipper on Fabric Edges (Required for Rain Protection)	Wind Sensor Included
Product Warranty	5 years	5 years	5 years

Why Corradi?



For over 50 years, Corradi has been designing innovative solutions that redefine outdoor living, and for over 15 years we've been bringing that vision to the U.S. What began as a small artisanal workshop in Italy in 1978 has grown into a global brand with advanced manufacturing facilities and international distribution.

We were the first to patent Pergotenda®, a groundbreaking concept that combines the durable structure of a pergola with the versatility of a retractable sunshade, setting a new standard for adaptable outdoor comfort. In addition to Pergotenda®, our product range includes louvered roofs, exterior screens, awnings, and other distinctive shading systems designed to suit a variety of architectural styles and outdoor needs.

Corradi is driven by design integrity, purposeful innovation, lasting performance, and strong partnerships.

Why Corradi?

- We have numerous patents that guarantee exclusivity and technical expertise.
- Pergotenda® is made only by Corradi.
- We have over 40 years of dedicated experience with outdoor spaces.
- Our products are high quality, innovative, and custom made.
- Italian design is our signature.
- We offer a wide range of products and services that are constantly evolving.
- From the design phase to manufacturing and installation, we provide support in all aspects of project management.
- Our Dealers are chosen, authorized, and trained to be the best.
- Our mission is to redefine outdoor living through custom shading solutions that combine the elegance of Italian design with the strength of American manufacturing, delivering style, durability, and lasting value.







General Coordination & Contents by
Corradi USA Marketing

Photography provided by Corradi USA, ShadeLab, and the following dealers:

Artivo Shades, ON, Canda
Budget Blinds of Wichita Falls, Wichita Falls TX
Conroe Awning and Screen, Conroe TX
Elevated Surfaces, Lavon TX
Opdyke Awnings, Belmar NJ
Outdoor Living Solutions, London ON, Canada
Ross Howard, Dallas TX

Special thanks to
Our Dealers for the Support

Printing
Digital Marketing & Print Solutions

credits

DISCLAIMER: This brochure, the information, technical features, product descriptions, names, images, photographs, reproductions, trademarks contained herein are an exclusive property of Corradi Srl & Corradi USA and are subject to the according norms for trademarks, patents, royalties, intellectual property and unfair competition. Without written authorization by Corradi, any reproduction, even partial, of the information, technical features, descriptions, names, images, photographs, trademarks in this brochure is prohibited. The manufacturer may modify or improve the products in this brochure without dispute. Differences in color tones in this brochure may occur and depend on the reproduction technique.

THE
outdoor
ALCHEMIST

Corradi USA
1910 N Josey Lane, Carrollton, TX 75006
972 466 0824
marketing@corradiusa.com
corradiusa.com

